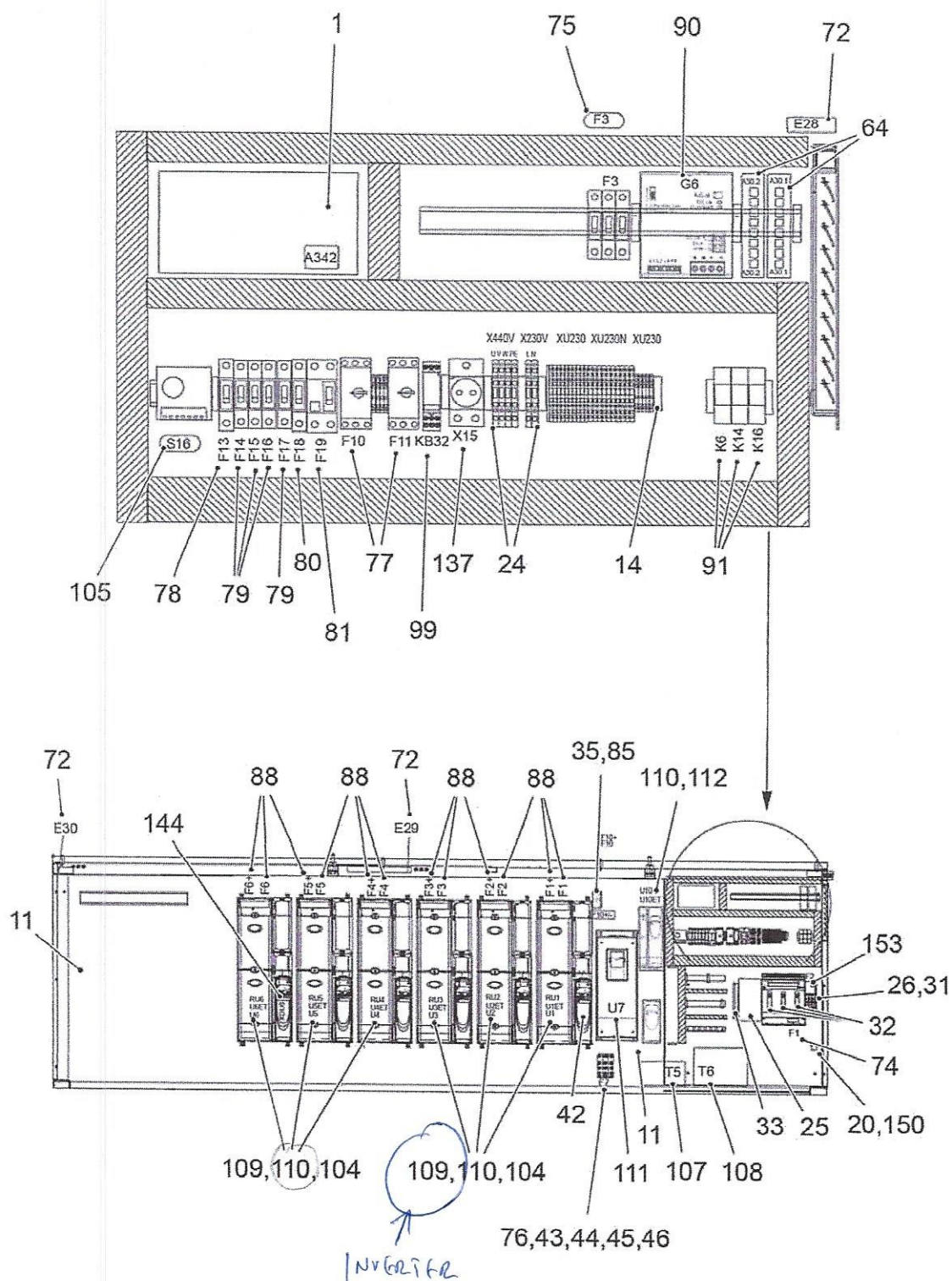


# 11.5 DISTRIBUTION OF EL. ELECTRIC CENTRAL EU440 N6053420

Rev. B



11.5 DISTRIBUTION OF EL.  
ELECTRIC CENTRAL EU440  
N6053420

68/95

Rev. B

Ref.	Part no.	Description EN	Qty	Notes
1	JP108689	REGULATOR	1	
11	65217388	DRIER	3	
14	652119082	END PLATE	22	
20	65303104	CONNECTOR	96	
24	JP105709	ADAPTER	6	
25	JP104573	ADAPTER	1	
26	JP104574	ADAPTER	1	
31	JP104579	CONTACT COVER	1	
32	JP106150	FUSE	3	500A
33	JP107910	ADAPTER	1	
35	JP106542	F USE BASE	1	
42	JP107493	KEYBOARD	1	
43	J022626	FUSE	3	50A
44	JP104718	CONTACT COVER	6	
45	JP104719	CONTACT COVER	3	
46	KS100046	COVER	3	
64	JP108324	SWITCH	2	
72	JP104584	LIGHT	3	24VDC 8W
72.1	65080507	BULB	2	5W 24V
74	JP104572	FUSE ADAPTER	1	
75	65300667	AUTOMATIC FUSE	1	0,5A
76	KS100044	F USE BASE	1	
77	JP107820	SWITCH	2	
78	65300666	FUSE	1	0,5A
79	65300650	FUSE	5	10A
80	65300665	FUSE	1	6 A,B
81	65301362	FAULT CURRENT SAFETY SWITCH	1	
85	JP107211	FUSE	2	25A
88	JP108918	FUSE	12	400A
90	JP108576	POWER SUPPLY	1	
91	J019120	RELAY	3	
91.1	J019121	RELAYMOUNTING	1	
99	65300448	RELAY	1	
104	JP107187	RESISTANCE UNIT	6	
105	J014332	THERMOSTAT SWITCH	2	
107	JP104123	TRANSFORMER	1	
108	JP107291	SIGNAL FILTER	1	
109	JP106214	INVERTER	6	400V
109.1	JP108213	CONTROL UNIT	1	
109.2	JP108211	INVERTER	1	SPMD 1401 90 KW 400V, POWER MODULE
110	JP105656	CONNECTOR	7	
111	JP107581	RECTIFIER	1	
112	JP108460	INVERTER	1	
137	65240283	PLUG SOCKET	1	
144	JP107481	CONNECTOR	1	
150	65303106	FRAME	5	connector
153	JP106704	FUSE	1	10A
153.1	JP106711	CONTACT PART	1	